

Standard Magnets

For Reed Switches and Sensors

Cylindrical Magnets

	Part Number	Material	D (mm)	L (mm)
	NDC-T	NdFeB:N35	2.0	4.0
	NDC-S	NdFeB:N35	3.0	7.0
	NDC-M	NdFeB:N35	4.0	10.0
NDC-L	NdFeB:N35	8.0	15.0	

Bar Magnets

	Part Number	Material	L (mm)	B (mm)	H (mm)
	NDR-T	NdFeB:N35	4.0	1.5	1.5
	NDR-S	NdFeB:N35	6.0	2.5	2.5
	NDR-M	NdFeB:N35	8.0	3.0	3.0
	NDR-L	NdFeB:N35	19.0	4.0	4.0

Magnet Material Specifications

Magnet Type		Remanance Br (mT)	Coercivity		Energy Product max. BH (kJ/m ³)	Operating Temperature (°C)
Composition	Code		HcB (kA/m)	HcJ (kA/m)		
Ferrite	C8	385	235	242	27.8	300
AlNiCo	LNG37	1180	48	53	37	550
NdFeB	N35	1180	880	955	270	80
NdFeB	N35SH	1180	880	1353	270	120
SmCo	YX20	925	680	1595	160	300

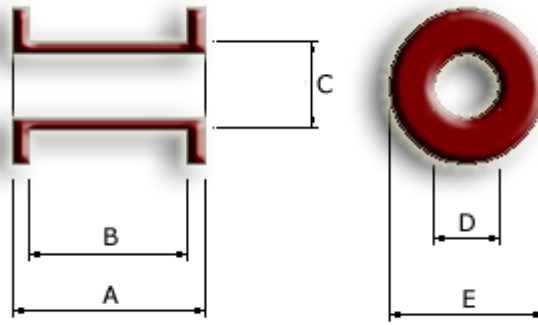
Due to continual improvement, specifications are subject to change without notice

www.reed-sensor.com

30 August 2006

Test Coils

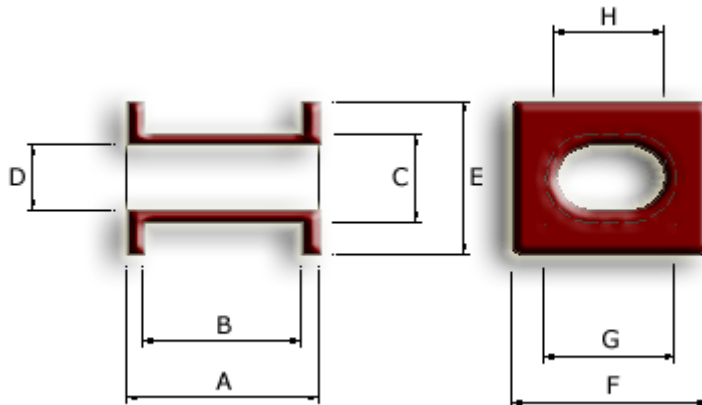
For Reed Switches and Sensors



Cylindrical

Test Coil No.	717 102 001	717 102 002	717 102 003	717 102 004	717 102 005
A	53.3	21.0	12.0	27.8	19.0
B	50.8	19.0	10.0	25.4	15.0
C	7.6	4.3	3.3	8.7	3.7
D	5.6	3.4	2.3	2.4	2.9
E	14.1	7.7	11.0	17.2	11.0
Wire Diameter	0.090	0.050	0.060	0.100	0.071
Turns	10000	5000	5000	5000	5000
Coil Res. Ω	845	740	600	404	450

All dimensions in mm



Rectangular

Test Coil	TCP 3001	TCP3002	TCP 3003	TCP 3004
A mm	13.5	23.3	42.5	42.5
B mm	7	19.7	36.5	36.5
C mm	8	6.8	14.8	15.8
D mm	6	6.2	13.8	13.8
E mm	14	14.8	25.0	25.0
F mm	18	20.6	28.6	35.6
G mm	12	12.2	14.6	22.8
H mm	10	11.6	13.6	20.8
Wire Diameter mm	0.05	0.08	0.15	0.15
Turns	5000	10000	5000	5000
Coil Resistance Ω	2000	1900	290	440

Due to continual improvement, specifications are subject to change without notice

www.reed-sensor.com

6 December 2004